

CONNECT TO THE LOGIX INTERNET: WINDOWS EXPLORER NETWORK SET UP

Who needs this User Guide?

Customers who desire simple step-by-step instructions to configure their network to accept your new LOGIX Internet service.

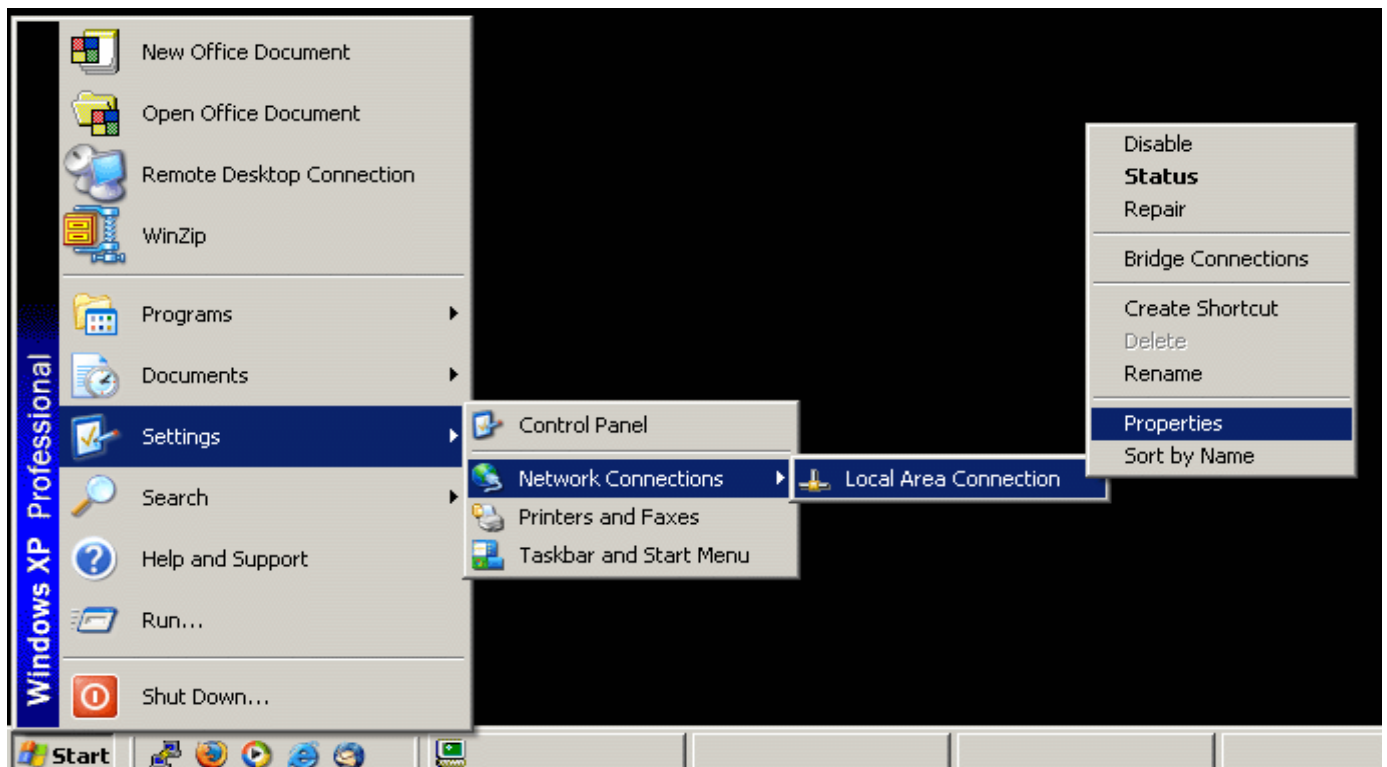
Why this User Guide?

This guide will take you through simple, user-friendly instructions on how to set up Windows XP to obtain an IP automatically. This will allow you to use your new LOGIX Internet service.

STEP 1

Go to **Start>Settings>Network Connections>Local Area Connection...**

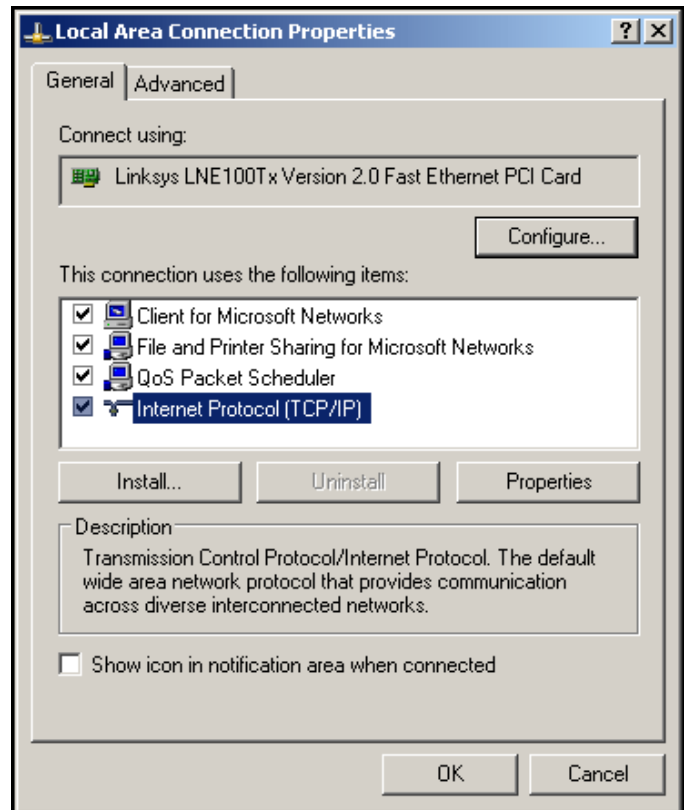
Once on "Local Area Connection", right click and select "Properties".



STEP 2

You will be presented with a "Local Area Connection Properties" window. Click on "Internet Protocol (TCP/IP)" and then click on "Properties".

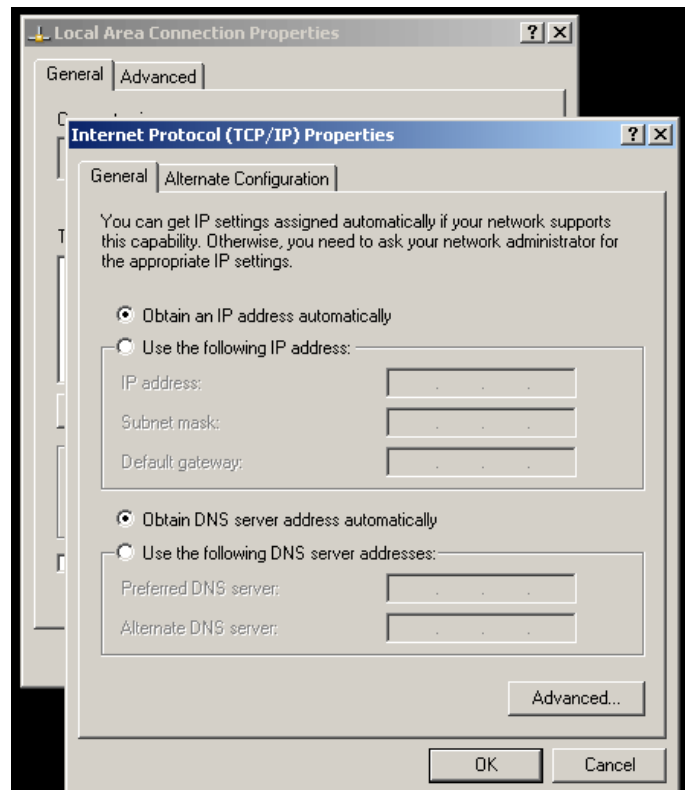
TIP: By default, LOGIX Communications deploys equipment with NAT (Network Address Translation) and DHCP (Dynamic Host Configuration Protocol) activated.



STEP 3 and STEP 4

You will be presented with an "Internet Protocol (TCP/IP) Properties" window. Please verify that you have a bullet next to "Obtain an IP address automatically" AND "Obtain DNS server address automatically".

Once you have verified the settings click on the "OK" button and then click on the "OK" button again to apply the settings to the "Local Area Connection Properties". After you click on the "OK" button, the computer may lock up for 3-10 seconds attempting to obtain an IP address. You are now finished. Click on the Internet Explorer icon to begin using LOGIX Internet.





Data Help Desk
1-877-673-1868
www.logixcom.com

DNS CONFIGURATIONS

In the event you assign a static IP address on a computer or firewall, you will need following DNS resolver IP(s) for the region you are in.

Oklahoma City/Tulsa:

216.201.128.10 and 66.196.212.10

Dallas:

66.196.212.10 and 216.201.128.10

Austin/San Antonio/Houston:

66.196.216.10 and 66.196.212.10